



namdharis
POWERED BY NATURE • DRIVEN BY TRUST



Namdhari Seeds™
Seeds for a better future

Catalogue 2024



Left Sri Satguru Jagjit Singh Ji & Right Sri Satguru Uday Singh Ji

Family of Farmers

The name Namdhari is identified with a community of Sikhs from Punjab, Northern region of India. The community was based mostly of farmers in the region and primarily formulated en-masse as part of the earlier freedom struggles against imperial rule in India. In fact, the Namdhari movement was amongst the first non-cooperation movements for freedom in the mid-1800s.

Our Inspiration

Sowing the seed of a fruitful business enterprise was the foresight of His Holiness **Sri Satguru Jagjit Singh Ji (1920 – 2012)**, the spiritual head of the Namdhari Sikhs.

As a connoisseur of global fruits and fresh produce, He wanted to tap into the possibilities of different climate in Punjab to introduce global products into the country. In order to fulfill this ambition, in the mid-1970, a large parcel was purchased near Bidadi (40km North of Bangalore) with the aim of starting farming operations.

Our Founder

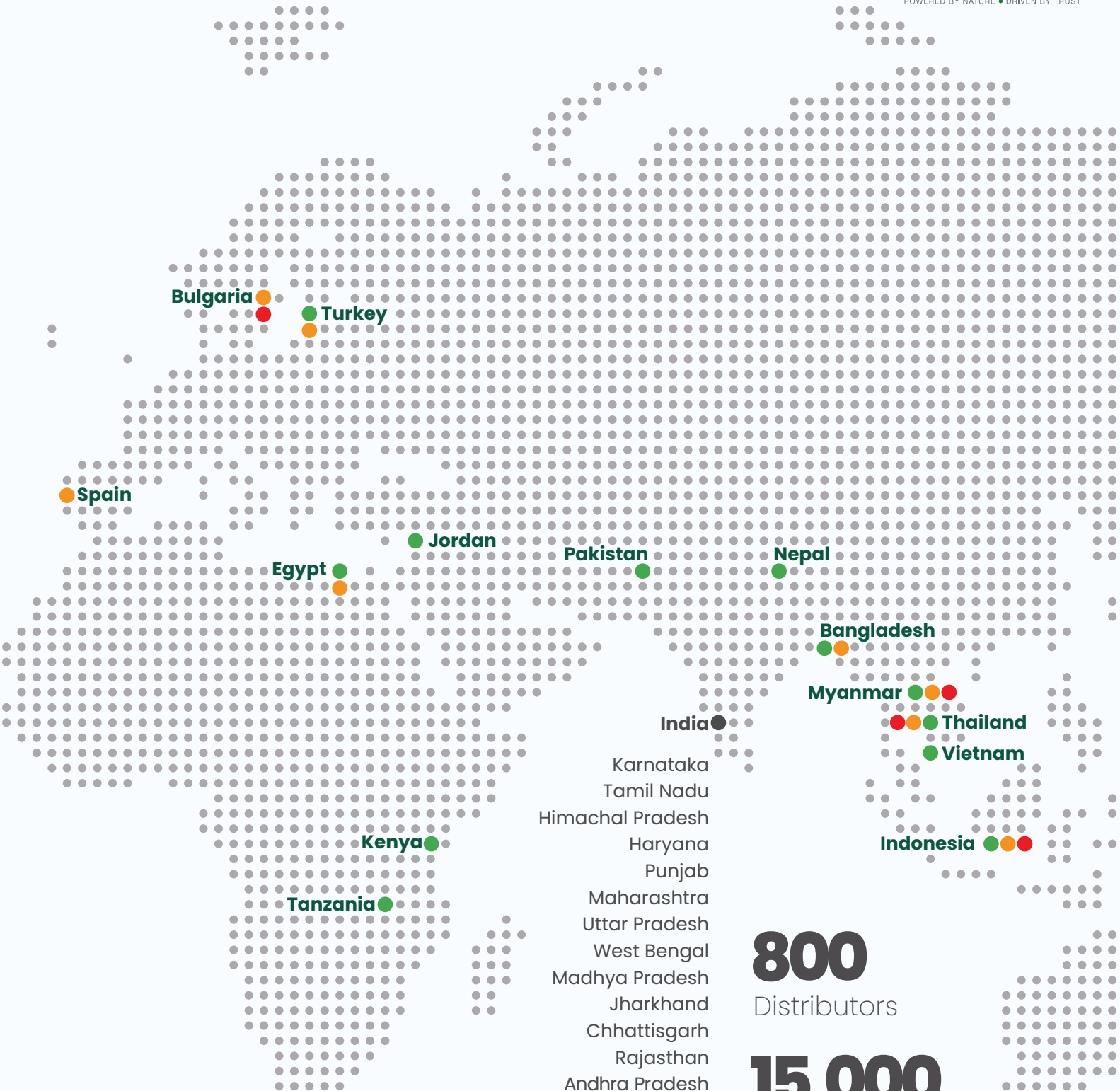
In 1982, **Satguru Uday Singh Ji**, took the reins of the organization. Under his dedicated leadership, the group embarked on its formal professional journey. Indian agriculture research during this period was primarily driven by the public sector with focus on bulk crops such as wheat and rice. Seeing the opportunity in researching vegetables, His vision ensured Namdhari was amongst one of the early pioneers that began breeding for vegetables in the late 1980s and released its first commercial varieties in 1992, the success of which transformed Namdhari's into one of the leading vegetable breeding companies in the country. Thereon, the diversification in fresh production and retail by 2001 were all born out of the ambition of **Satguru Uday Singh Ji**, in bringing the best of international produce to India and therefore to the Indian consumers. Today, Namdhari has made significant leaps in illustrating the growth of modern India and matching capabilities at a global level.





namdharis

POWERED BY NATURE • DRIVEN BY TRUST



International Sales & Marketing

International Breeding & Trial

International Seed Production

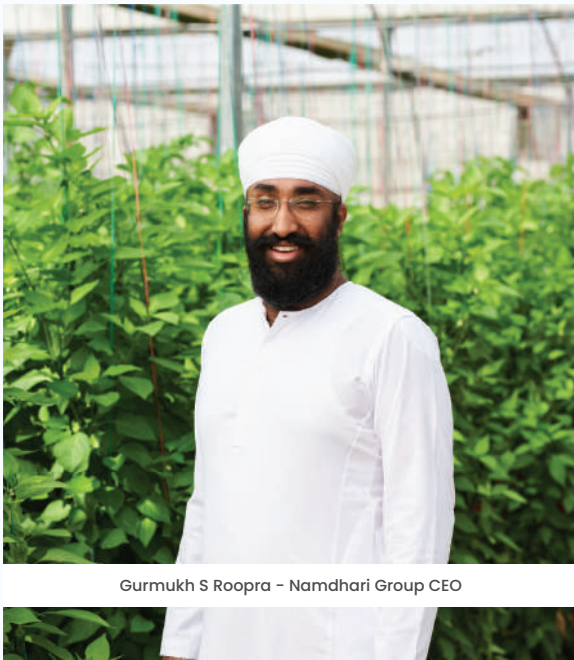
Domestic Marketing Presence

- Karnataka
- Tamil Nadu
- Himachal Pradesh
- Haryana
- Punjab
- Maharashtra
- Uttar Pradesh
- West Bengal
- Madhya Pradesh
- Jharkhand
- Chhattisgarh
- Rajasthan
- Andhra Pradesh
- Odisha
- Bihar
- Gujarat

800
Distributors

15,000
Dealer touch
points

Cultivating the Future



Gurmukh S Roopra – Namdhari Group CEO

We stand at the forefront of a mission more significant than just selling seeds. We are architects of change, cultivating not just crops, but a brighter future for farmers and consumers alike.

Rooted in legacy, Branching towards progress:

Our story began decades ago, driven by the revolutionary spirit of our chairman Sri Satguru Uday Singh Ji. His vision of empowering farmers and ensuring food security for all continues to fulfil our commitment to producing high-quality hybrid vegetable seeds. Today, that commitment flourishes across India and beyond, touching the lives of millions through our diverse portfolio.

Food security and nourishing a Pan-Tropical paradise:

Our vision is to have a reach that extends far beyond the Indian mainland. We recognise that the projected population growth over the next 30 years will primarily be in countries within the tropical belt of Africa and Asia. Therefore, we are deeply committed to investing our efforts in the well-being of smallholder farmers in open-field tropical regions across the globe, adapting our expertise to suit diverse climates and soil conditions. We strive to be a reliable partner for farmers, offering them seeds specifically bred to thrive in their unique environments

However, our journey is not merely about geographical expansion. We are unrelenting in our pursuit of innovation, constantly pushing the boundaries of seed research and development, especially on crops which are less exploited through technology. Our dedicated team of scientists are working tirelessly to develop climate-resilient, high-yielding varieties that combat pests and diseases, maximizing productivity while minimizing environmental impact.

Our commitment:

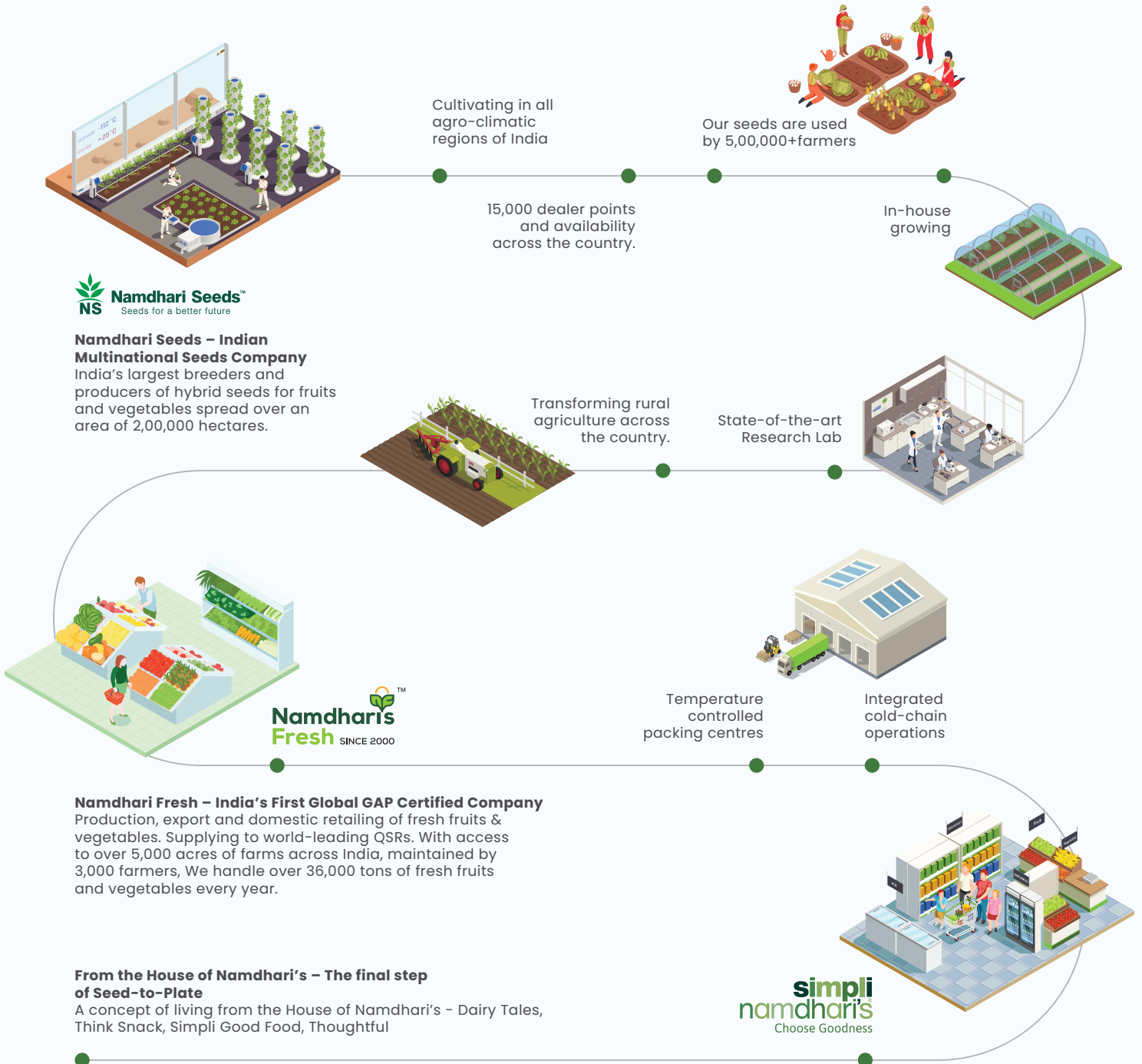
As we move forward, we remain rooted in our core values – integrity, respect, and service. We invite you to join us on this journey, partnering with us as we cultivate a future where abundant harvests, improved livelihoods, and a healthy planet go hand in hand.

Together, let us sow the seeds of change, and reap the fruits of a brighter tomorrow.

Value Chain Integration

Over time, the Namdhari's Group has dedicatedly nurtured and cultivated sustainable and extensive value chains, empowering us to serve markets with utmost care and effectiveness.

Our commitment extends as we persist in utilising our value chain capabilities to thoughtfully curate products, spanning the realms of fresh, dairy, bakery and other Fast-Moving Consumer Goods (FMCG), always staying ahead of the curve.



Simpli Namdhari's – India's Only Vegetarian Omni Channel Retailer
Serving our customers through every touch point for a seamless shopping experience.



Namdhari Seeds

Recognizing the potential of hybrids to offer better productivity and returns compared to traditional commodities, our journey into researching hybrid seeds began in the Indian context in late 1980's . The primary focus has been on adaptability to open field, disease resistance especially to viruses alongside yield and quality.

Today, with a strong brand heritage, investment in R&D, distribution network, and vast product portfolio; we have commercialised over 500 hybrids into the market. Namdhari seeds has established itself as a preferred hybrid seed provider to millions of farms across southeast Asia. We have relentlessly worked towards understanding the challenges and serving a community of millions of farmers with small land holdings by providing tangible solutions addressing the challenges of climate change, pest, and virus pressures. Our progress is fuelled by a committed team of scientists, harnessing innovative and technical skills to enhance our R&D capabilities. Our future-looking strategies have enabled us to become the only value chain integrated player in this industry with tremendous possibilities in a market where consumption is very fragmented.

Namdhari Seeds has a vision of becoming the preferred seeds provider for tropical open-field; now extended its focus to multiple countries across Southeast Asia, the Middle East and Europe.

Our Journey



The watershed year, when the Bidadi farm was purchased.
1974



1985
Namdhari Seeds Pvt. Ltd was constituted.



1987
First ever Export of Seeds - to US and Japan.



1994
Seeds Production & Vegetables Farming began in Ooty, Nilgiris Farm.



1992
Hybrid 815 Tomato launch turned around the traditional tomato cultivation in India.

1993
295 F1 Watermelon Revolutionised the Watermelon farming in India across seasons.

1999
Operations commenced in Thailand.

2000
First ever fresh vegetables export - to Europe.



2019
Launch of flagship 'Simpli Namdhari's' store in Jayanagar, Bengaluru.



2007
Operations Commenced in Indonesia.



2001
Middle East Operations commenced in Egypt & Jordan.



2010
Operations commenced in Turkey.



2006
Commencement of Bulgaria Operations.

2001
Launch of the first Namdhari's Retail Outlet in Bengaluru.

B2B Contract Seed Production

Why Produce with Namdhari?



Proven Track Record: Enriched experience, largest contract producer of vegetables seeds and Flower Seeds in India (Hybrids and OPVs)



International Production capabilities: Leverage multiple production locations within India and internationally including Thailand, Indonesia, Kenya and Bulgaria.



Quality Focus: To produce disease-free (healthy) and quality seed by maintaining high sanitary standards.



Integrated Supply Chain Operations: Dedicated teams to handle logistics, quality testing phytosanitary needs and cold storage for contract production.



Organic Pioneer: India's largest certified organic seed producer.

Our Portfolio

Produce seeds of over 40 crops ranging from vegetables, flowers, beans and herbs

Cucurbitaceous crops: Squash, Cucumber, Pumpkin, Bottle Gourd, Watermelon, Melon, Bitter Gourd, Ridge Gourd, Sponge Gourd & others

Solanaceous crops: Tomato, Hot Pepper, Sweet Pepper and Eggplant

Leguminosae Crops: Yard Long Beans, Pole Beans, Bush Beans and Peas

Hybrid Flower Seeds: Geraniums*, Pansy, Viola, Vinca, Petunia, Portulaca, Mimulus, Delphinium, Antirrhinum, Primula, Cleome, Marigold & others

OP Flower Seeds: Vinca, Salvia, Geraniums*, Petunia, Begonia, Celosia, Cosmos, Coleus, Coreopsis, Gaillardia, Nasturtium and others

Herbs: Basil & Dill

Sowing windows:

Category	Crops	Sowing Season	Harvesting Season	Delivery Month
Vegetables	Cucurbitaceous Crops	May-June	September-October	December-January
		September-October	February-March	May-June
	Pepper	May-July	January-March	June-July
	Tomato and Eggplant	September-October	February-March	May-June
	Leguminosae Crops	October-November	February-March	May-June
Flowers	Hybrids	May-July	February-March	June-July
		September-October	February-April	July-August
	OP	May-July	February-March	June-July
		September-October	March-April	July-August
Herbs	Basil & Dill	September-October	March-April	July-August

*For Geraniums-harvesting starts from June



Intellectual Property

Over 35 years of exhibiting high levels of business ethics, recognizing the critical role of IP in our industry, we have established distinct business units for domestic brand production and B2B contract production ensuring the highest integrity possible.

Organic Seed Production

Certified by IMO for organic seed production process with requirement of norms for NPOP & USDA-NOP for both open field and green house seed production.

Grower Network

Namdhari has largest dedicated grower network for contract seed production in the country across all major Agro climatic zones.



Infrastructure

Largest owned land bank which includes open fields, greenhouses & nethouses dedicated for contract seed production



Production Locations

We have dedicated production locations across India and abroad with diverse range of Agro-climatic conditions to enhance capability to adapt and thrive in various environments.



Coding for Seed Production

We follow Centrally controlled and monitored coding process for all seeds we produce.



Equal Opportunity Employer

Namdhari Seeds does not discriminate in employment practices basis colour, religion, gender, age, nationality, sexual orientation, marital or veteran status, disability, or any other legally protected status.



Zero Child Labour

At Namdhari Seeds, we vehemently condemn and prohibit any form of child labour within our operational spheres, extending this commitment to all contracted seed production fields. We conduct stringent routine audits to ensure full adherence to this policy.



Quality Control & Certifications

Necessary seed treatment in compliance with International Statutory Regulations, Global GAP certified producer, ISTA accredited quality testing laboratory to issue Orange International Certificate (OIC) for seed lots, ISHI-VEG standards, NABL accredited in-house facilities for seed health testing for all crops for major pathogens.



Mr. M S Subramanya
Senior Vice President
(Contract Seed Production)
subramanya@namdharisgroup.com

Certifications



Global G.A.P. Certified:



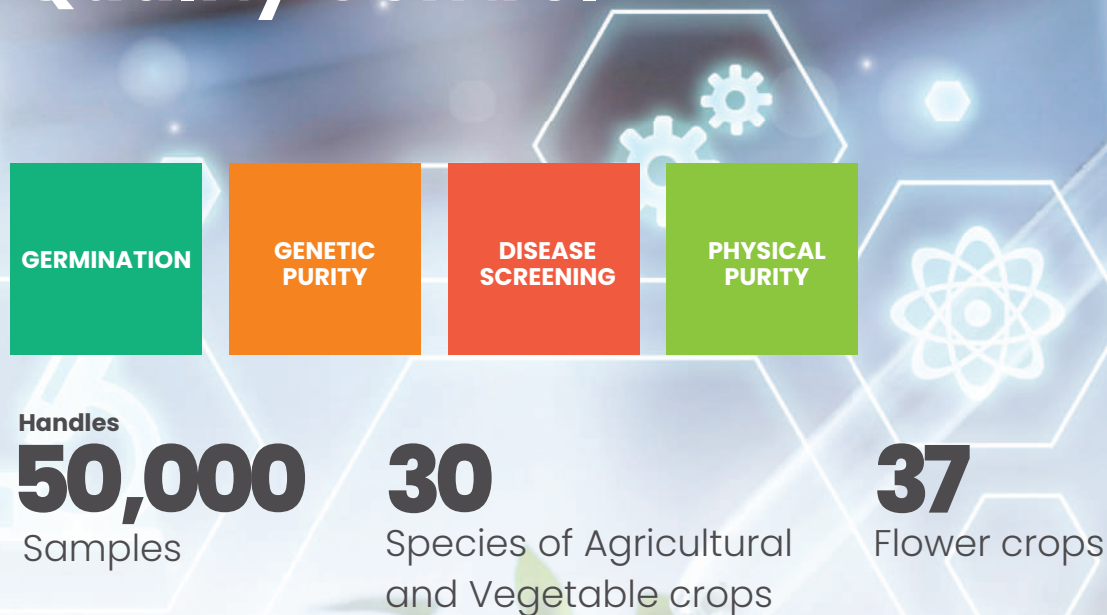
USDA-NOP



NPOP



Integrated Seed Health & Quality Control



The consistent excellence of **Namdhari seeds** comes down to our Seed Quality lab, where in-house skills and internationally accepted protocols are developed to produce seeds with high germination, vigour and uniformity.

We have a well-equipped Quality Control lab for testing the physical seed purity, germination and seed vigour. The seed health laboratory carries out tests on seed borne diseases. The molecular biology laboratory lends support for genetic purity and this is done along with field grow outs. We are one of the first labs in India to obtain ISTA Accreditation for Orange and Blue certificates.

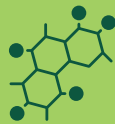
As a part of quality control, we are dedicated to the "**Healthy Seeds for a Healthy Future**" initiative, we meticulously monitor and diagnose the presence of pathogens in parents, foundation and commercial seeds, ensuring the production of 100% pathogen-free seeds. Seed health stands as a paramount parameter in our quality testing, with all in-house and commercial seeds undergoing rigorous health assessments at each stage of production. Our company premises boast fully equipped, state-of-the-art facilities that bolster our commitment to seed health. An adept team of qualified scientists is intricately involved in every aspect of the seed health testing and treatment process. They adhere rigorously to global standards, ensuring a consistent delivery of the highest quality seeds to our stakeholders. This unwavering dedication underscores our commitment to not only meeting but exceeding the expectations of our customers by providing seeds that epitomize excellence in health and quality.



Research & Development



Tissue Culture Lab



Molecular Biology Lab



Pathology Lab

Research & development

Empowered by cutting-edge labs di-haploid, tissue culture, and molecular biology, our breeding triumphs at **namdhari seeds** redefine agricultural innovation. The synergy of these labs, bolstered by our strategic multi-location presence, propels our breeding programs into new heights. From hastening breeding cycles to precision in pathogen-free seed development, our labs stand as beacons of excellence, shaping the future of agriculture.

Di-haploid and tissue culture lab

The tissue culture and di-haploid lab's expertise spans across flowers, vegetables, and fruit crops, demonstrating our versatility and comprehensive understanding of plant biology. At the core of our success is our commitment to utilize chemically defined nutrient media, cultivating explants to achieve in-house production of disease-free plants with unparalleled uniformity.

The accomplished team is proficient in employing embryo rescue methods for essential vegetable crops. This ensures the preservation and enhancement of valuable genetic traits.

The di-haploid lab is to accelerate and optimise the breeding cycle. They play a pivotal role in supporting various breeding programs through standardized protocols for doubled haploid plants across multiple crops. This commitment to innovation ensures we have access to advanced technologies that significantly enhance the efficiency of their breeding efforts.

Molecular biology

Empowering crop breeding through powerful tools like diversity analysis, marker-assisted selection (MAS), and marker-assisted backcrossing selection (MABC), we accelerate the development of superior hybrids. The lab plays a multifaceted role in ensuring the quality and authenticity of our hybrids, through DNA fingerprinting and genetic purity analysis for commercial hybrids. This thorough analysis ensures the authenticity of our hybrid varieties, providing our customers with the assurance that they are investing in crops of the highest genetic integrity. With a focus on both innovation and accuracy, our molecular biology department ensures **namdhari seeds** pushes the boundaries of agricultural excellence.

Pathology

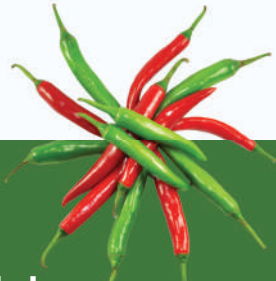
Plant pathology research department collaborates closely with breeding programs, playing a pivotal role in the identification and screening of pathogens. This collaborative effort is instrumental in developing hybrid seeds endowed with robust resistances against a spectrum of diseases. The department is dedicated to various aspects, including pathogen identification, understanding disease etiology and evaluating the economic impact of diseases. Employing cutting-edge technologies such as ELISA and PCR methods, our laboratory ensures precise and reliable detection of pathogens. To maintain a high standard of accuracy, the department follows standardized protocols for disease resistance screening against viral, fungal, and bacterial diseases.

Products Index



Tomato

Page 13-14 (Domestic)
Page 15-16 (International)



Hot pepper

Page 17-18 (Domestic)
Page 19 (International)



Capsicum

Page 21-22



Okra

Page 23-24



Watermelon

Page 25-26 (Domestic)
Page 27 (International)



Muskmelon

Page 28-29



Cucumber

Page 30-31 (Domestic)
Page 32 (International)



Squash

Page 33-34 (International)



Cauliflower

Page 35-36



Cabbage

Page 37-38



Asian Gourds

Page 39-40
(Sponge Gourd & Bottle Gourd)



Ridge gourd

Page 41-42



Bitter gourd

Page 43-44



Marigold

Page 47-48



Coriander

Page 49



Carrot

Page 45-46



Tomato



Domestic Portfolio

**NS 962 F1**

Prolific bearer with green shoulder, sour in taste showing intermediate resistance to TyLCV.

NS 5002 (1068) F1

Determinate hybrid bearing compact oval fruit, suitable for long-distance shipping. Recommended for rainy and winter seasons, showing intermediate resistance to TyLCV.

NS 5038 F1

Excellent bearer with green shoulder, sour in taste showing intermediate resistance to TyLCV.

INDIA OPEN FIELD DETERMINATE

Variety	Maturity (days)	Plant type	Fruit unripe shoulder colour	Fruit colour	Fruit shape	Fruit weight (grams)	Fruit firmness	Season recommendation
NEW NS 5036 F1	65-70	Determinate Tall	Light green	Dark red	Oblate	110-120	Excellent	Kharif, Rabi
NEW NS 5038 F1	70-75	Determinate Tall	Light green	Dark red	High round	90-110	Excellent	Kharif, Rabi
NEW NS 5037 F1	60-65	Determinate	Green shoulder	Dark red	Oblate	80-100	Good	Round the Year
NEW NS 5031 F1	65-70	Determinate	Light green	Dark red	Oblate	100-120	Good	Kharif, Rabi
NS 5013 F1	65-70	Determinate	Green shoulder	Deep red	High round	90-100	Medium	Kharif, Rabi
NS 962 F1	60-65	Determinate	Green shoulder	Deep red	Round oblate	90-100	Good	Kharif, Rabi
NS 592 F1	55-60	Determinate Short	Green shoulder	Deep red	High round	90-100	Good	Kharif, Rabi
NS 526 F1	65-65	Determinate	Green shoulder	Deep red	Flat round	110-120	Excellent	Kharif, Rabi
NS 585 F1	70-75	Determinate Tall	Green shoulder	Deep red	Flat round	80-90	Good	Kharif, Rabi
Swaraksha F1	65-70	Determinate	Light green	Deep red	Square round	100-110	Medium	Kharif, Rabi
NS 5002 (1068) (F1)	65-70	Determinate	Light green	Deep red	Oval-Saladette	90-100	Excellent	Kharif, Rabi
NS 5072 (F1)	65-70	Determinate	Light green	Deep red	Saladette	100-110	Excellent	Kharif, Rabi, Spring-summer
NS 5016 (F1)	70-75	Determinate Tall	Light green	Deep red	Oval	90-100	Excellent	Kharif, Rabi, Spring-summer
NS 501 (F1)	65-70	Determinate Tall	Light green	Medium red	Oval-Saladette	80-90	Good	Kharif, Rabi

International Portfolio



NS 4293 F1

A superior indeterminate hybrid, ideal for the spring season. A high yielding hybrid with uniform attractive round oblate fruits, excellent smoothness and firmness.



NS 5440 F1

An indeterminate pink hybrid producing large fruits of 300g. This variety carries multiple resistances and is suitable for spring planting.

MIDDLE EAST GREENHOUSE INDETERMINATE

Variety	Maturity (days)	Plant type	Mature fruit colour	Fruit shape	Fruit weight (grams)	Fruit firmness	Resistances	Season recommendation
NEW NS 5520 F1	Very Early	Indeterminate round	Red	Round	180-200	Excellent	HR: V,Fol2,ToMV,N,FCR IR: TYLCV	Autumn
NEW NS 5551 F1	Mid early	Indeterminate cluster	Red	Round	130-150	Hard	HR: V,Fol2,ToMV,N,TSWV IR: TYLCV	Autumn
NEW NS 5545 F1	Early	Indeterminate cherry	Red	Round	18-22	Good	HR: Fol2,ToMV,N,TSWV IR: TYLCV,Cf	Autumn
NEW NS 5524 F1	Early	Indeterminate cherry	Red	Round	16-18	Very Hard	HR: Fol2,ToMV,N IR: TYLCV	Autumn
NEW NS 5584 F1	Early	Indeterminate cluster	Red	Round	110-130	Hard	HR: V,Fol2,ToMV,N,TSWV IR: TYLCV	Autumn
NS 4293 F1	Early	Indeterminate round	Red	Round	220-240	Good	HR: V,Fol2,ToMV,FCR IR: TYLCV,TSWV	Early Spring
NS 5440 F1	Early	Indeterminate round	Pink	Round	275-300	Good	HR: V,Fol2,ToMV,N,FCR,Sm IR: TYLCV	Spring
NS 5516 F1	Early	Indeterminate	Pink	Round	230-250	Good	HR: V/Fol2/ToMV/N/FCR IR: TYLCV	Spring
NS 5583 F1	Mid early	Indeterminate cherry	Red	Round	20-22	Good	HR: V,Fol2,ToMV,TSWV,N IR: TYLCV	Autumn

International Portfolio



NS 5024 F1

An excellent hybrid with high bacterial wilt tolerance, appealing red colour and oval fruits.

NS 5025 F1

This determinate hybrid carries excellent bacterial wilt tolerance, oval shaped fruits with charming red colour.

MIDDLE EAST OPEN FIELD DETERMINATE

Variety	Maturity (days)	Plant type	Mature fruit colour	Fruit shape	Fruit weight (grams)	Fruit firmness	Resistances	Season recommendation
NEW NS 5536 F1	Early	Determinate	Red	Round	230-250	Good	HR: V,Fol2,ToMV,N IR: TYLCV	Spring
NEW NS 5534 F1	Mid early	Determinate	Red	Oval	150-170	Good	HR: V,Fol2,TSWV IR: TYLCV	Spring
NS 123 F1	Mid early	Determinate	Red	Oval	130-150	Very good	HR: V,Fol2,ToMV,N,FCR IR: TYLCV	Spring
NS 5507 F1	Early	Determinate	Red	Oval	110-130	Very good	HR: V,Fol2,ToMV,N,TSWV	Spring
NS 5431 F1	Medium	Determinate	Red	Square round	130-150	Good	HR: V,Fol2,ToMV IR: TYLCV	Autumn
NS 5510 F1	Early	Determinate	Red	Round	225-250	Good	HR: V,Fol2,ToMV IR: TYLCV	Spring
NS 5522 F1	Early	Determinate	Red	Oval	100-110	Good	HR: V,Fol2,ToMV,N,TSWV	Spring

SOUTH EAST ASIA OPEN FIELD DETERMINATE

Variety	Maturity (days)	Plant type	Mature fruit colour	Fruit shape	Fruit weight (grams)	Fruit firmness	Intermediate Resistances	Season recommendation
NEW NS 5024 F1	Mid early	Determinate tall	Red	Oval	90-100	Excellent	High BW and TYLCV tolerance	Rainy
NEW NS 5026 F1	Mid early	Determinate tall	Red	Oval	90-100	Excellent	High BW and TYLCV tolerance	Rainy/Summer
NS BWT 5 F1	Mid early	Determinate tall	Red	Oval	90-100	Good	BW tolerance	Rainy
NS 5030 F1	Mid late	Determinate tall	Red	Oval	100-120	Excellent	TYLCV Tolerance	Rainy
NS 5025 F1	Mid early	Determinate	Red	Oval	90-100	Very Good	High BW and TYLCV tolerance	Rainy



HOT PEPPER



Domestic Portfolio



NS 2549 F1

Perfectly suitable for green fresh and red dry use with good color retention. Intermediate resistance to LCV (leaf curl virus).

NS 2701 F1

Dual purpose hybrid suitable for green fresh and red dry with good color retention. Intermediate resistance to LCV (leaf curl virus) and thrips attacks.

Variety	Usage	Maturity (days)	Immature fruit colour	Mature fruit colour	Fruit length (cm)	Fruit width (cm)	Pericarp thickness	Pungency
NEW NS 2565 F1	Green fresh & red dry	65-70	Dark green	Dark red	9-10	1.4-1.6	Very thick	Medium high (55,000 SHU)
NEW NS 2549 F1	Green fresh & red dry	65-70	Light green	Deep red	10-11	1.2-1.3	Thick	Medium high (50,000 SHU)
NEW NS 2745 F1	Green fresh & red dry	60-65	Light green	Deep red	10-11	1.2-1.3	Thick	Medium high (50,000 SHU)
NEW NS 2570 F1	Green fresh & red dry	65-70	Dark green	Dark red	12-13	1.4-1.6	Very thick	Medium high (55,000 SHU)
NS 2560 F1	Green fresh & red dry	65-70	Dark green	Deep red	6-7	2.0-2.1	Thin	High (60,000 SHU)
NS 1101 F1	Green fresh & red dry	70-75	Dark green	Deep red	8-10	1.0-1.1	Medium thick	High (60,000 SHU)
NS 1701 F1	Green fresh & red dry	70-75	Dark green	Deep red	8-10	0.8-0.9	Thin	Very high (75,000 SHU)
NS 2572 F1	Green fresh & red dry	70-75	Dark green	Deep red	8-10	0.9-1.0	Thin	Very high (75,000 SHU)
NS 2701 F1	Green fresh & red dry	65-70	Dark green	Deep red	9-10	1.1-1.2	Thin	High (60,000 SHU)

International Portfolio



NS 2000 F1

Suitable for greenhouse cultivation in the Middle East. A vigorous and semi spreading plant with Non-pungent, attractive green fruits perfect for the fresh market. Resistant to TSWV (Tsw:0) and TMV (Tm:0-2)



NS 2917 F1

An upright high yielding hybrid with vigorous tall plants. Highly pungent with attractive dark green fruits. Suitable for red harvest with a glossy red fruits. Highly suitable for Thailand and Southeast Asian countries.

Variety	Plant habit	Maturity (days)	Immature fruit colour	Mature fruit colour	Fruit length (cm)	Fruit width (cm)	Pericarp thickness	Pungency
NEW NS 2000 F1	Semi spreading	65-75	Dark green	Dark green	23	2.5	Medium firm	Non-Pungent
NS 7510 F1	Medium tall spreading	55-60	Medium green	Bright red	14	1.5	Medium firm	Medium
NS 2722 F1	Tall spreading, upright	75-85	Dark green	Dark red	6	1.1	Medium firm	Very high
NS 2917 F1	Tall spreading, upright	75-85	Dark green	Dark red	7	1.2	Medium firm	Very high





Capsicum





NS 280 F1

Tall and vigorous plants suitable for protected cultivation. Blocky shiny fruits weighing 200-220 grams, excellent keeping quality with bright red color development at maturity.

NS 281 F1

Tall and vigorous plants suitable for protected cultivation. Blocky shiny fruits weighing 200-220 grams, excellent keeping quality and yellow color development at maturity.

NS 82 F1

Vigorous plant suitable for open field cultivation. Blocky firm fruits weighing 240-260 grams with excellent keeping quality.

Variety	Recommended cultivation	Maturity (days)	Fruit shape	Fruit color	Average weight (grams)
NS 280 F1	Protected	70-75	Blocky	Dark green to red	200-220
NS 281 F1	Protected	65-70	Blocky	Dark green to yellow	200-220
NS 82 F1	Open field	65-70	Big blocky	Dark green	240-260
NS 292 F1	Open field	70-75	Blocky	Dark green	180-200
SUPREME WONDER F1	Open field	70-75	Blocky	Dark green	160-180



OKRA



NS 7801 F1

Medium dwarf plant type with high tolerance to YVMV and ELCV. Suitable for long duration harvesting.



NS 7803 F1

Medium dwarf plant type with intermediate tolerance to YVMV and ELCV. Excellent shelf life and shipping qualities.



NS 7772 F1

Medium tall plant type with intermediate tolerance to YVMV and ELCV. Excellent fruit quality and shelf life.

Variety	Maturity (days)	Plant habit	Internodal distance	Fruit colour	Fruit length (cm)	Disease tolerance
NEW NS 7801 F1	42-45	Medium dwarf	Short	Dark green	14-16	IR: YVMV & ELCV
NEW NS 7803 F1	42-45	Medium dwarf	Short	Very dark green	14-16	IR: YVMV & ELCV
NEW NS 7809 F1	42-45	Medium dwarf	Short	Dark green	16-18	IR: YVMV & ELCV
NS 7772 F1	43-48	Tall plant	Medium long	Very dark green	14-16	IR: YVMV & ELCV
NS 862 F1	43-48	Tall plant	Medium long	Dark green	16-18	IR: YVMV & ELCV



Watermelon



Domestic Portfolio



NS 295 F1

Mid-early hybrid, with wide adaptability and excellent shipping and keeping quality. Average fruit weight 9-10 kg.



NS 7057 F1

Early hybrid, wide adaptability with uniform sized fruits of 7-9 kg. Excellent shipping and keeping quality.



NS 23 F1

Profuse yielder producing 3kg to 5kg oblong shaped fruits. Attractive black rind pattern with high brix.

JUBILEE

Variety	Maturity (days)	Rind pattern	Fruit shape	Flesh colour	Average fruit weight (kg)	Brix (%)
NEW NS 7057 F1	80-85	Dark green with bluish green stripes	Oblong	Deep crimson red	7-9	12-13
NEW NS 7076 F1	80-85	Light green with bluish green stripes	Oval	Deep crimson red	6-8	11-12
NS 295 F1	80-85	Light green with green stripes	Oblong	Crimson red	9-10	12-13

ICEBOX

Variety	Maturity (days)	Rind pattern	Fruit shape	Flesh colour	Average fruit weight (kg)	Brix (%)
NEW NS 7032 F1	60-65	Bluish black	Oblong	Deep crimson red	3-5	12-13
NEW NS 7207 F1	60-65	Bluish black	Oblong	Deep red	4-5	13-14
NS 23 (IBH) F1	60-65	Bluish black	Oblong	Deep crimson red	3-5	12-13
NS 34 (IBH) F1	60-65	Bluish black	Oblong	Deep crimson red	3-5	12-13

International Portfolio



NS 7018 F1

This superior high yielding hybrid has good fruit setting ability. It bears an attractive round to oval fruits of 8-10 kg with a dark green rind and visible stripes. Bright red flesh with excellent crispy texture and sweetness.

NS 62 F1

Widely adaptable, high-yielding hybrid with strong vines and good leaf cover. The fruits are large 8-10 kg, oval to oblong in shape, having light green rind with broad dark green stripes. Flesh is crimson red in colour with a sweet taste exhibiting good keeping and transport qualities.

SUGARBABY

Variety	Fruit shape	Fruit pattern	Flesh colour	Brix (%)	Fruit size (kg)
NEW NS 7018 F1	Round oval	Dark green with visible stripes	Crimson red flesh	12-13	8-10
NS 200 F1	Round oval	Dark green with visible stripes	Deep red	12-13	8-10

CRIMSON SWEET

Variety	Fruit shape	Fruit pattern	Flesh colour	Brix (%)	Fruit Size (kg)
NEW NS 7218 F1	Oval	Crimson sweet (light green tiger stripes)	Crimson red flesh	12	8-10
NEW NS 7224 F1	Oval	Crimson sweet	Crimson red flesh	12	8-10
NS 62 F1	Oval to Oblong	Light green rind with dark green broad stripes	Crimson red flesh	12-13	8-10



Muskmelon





NS 910 F1

Hybrid with short, vigorous plants and attractive round fruits of 1.5 kg to 2.0 kg with good netting. Orange flesh, sweet with good texture and long shelf-life.

Variety	Maturity (days)	Fruit shape	Flesh colour	Fruit surface	Fruit weight (kg)	Sweetness TSS (%)
NEW NS 7374 F1	55-60	Round cantaloupe	Salmon	Netted cream	1.5-1.8	14-16
NEW NS 7301 F1	70-75	Round kajri	Dark orange	Yellow with green stripe	0.9-1.0	11-12
NS 910 F1	60-65	Round cantaloupe	Orange	Netted cream	1.5-2.0	12-13



Cucumber

Domestic Portfolio

**NS 4038 F1**

Bitterfree fruits with uniform, green, and cylindrical shape. Shows intermediate resistance to downy mildew.

**NS 4124 F1**

Fruits are uniform, green, and cylindrical with no bitterness. Shows intermediate resistance to CMV and downy mildew.

OPEN FIELD CULTIVATION

Variety	Recommended cultivation	Plant type	Fruit length (cm)	Fruit colour
NEW NS 4124 F1	Open field	Tall vigorous	18-20	Light green
NEW NS 4184 F1	Open field	Tall vigorous	18-20	Dark green
NEW NS 4038 F1	Open field	Tall vigorous	18-20	Dark green
NEW NS 4034 F1	Open field	Tall vigorous	20-22	Dark green with specks
NS 404 F1	Open field	Tall vigorous	26-28	Light green with specks
NS 415 F1	Open field	Tall vigorous	22-24	Light green with specks
NS 425 F1	Open field	Tall vigorous	13-15	Creamy white

International Portfolio

**NS 4109 F1**

This hybrid is best suited for late spring summer and early autumn season with tolerance to powdery mildew. It is a gynoecious parthenocarpic hybrid with 3-5 fruits per node. The fruits are medium long (16-19cm), attractive, slightly ribbed and dark green.

NS 4191 F1

This hybrid is best suited for winter season in middle east with tolerance to powdery mildew. It is a gynoecious parthenocarpic hybrid with 3-5 fruits per node. The fruits are medium long (18-21cm), attractive, slightly ribbed and dark green.

GREENHOUSE CUCUMBER

Variety	Recommended cultivation	Type	Fruit length (cm)	Fruit colour	Recommended season	Resistances
NEW NS 4191 F1	Protected cultivation	Beith alpha	18-21	Shiny dark green	Winter	IR: PM HR: Cca
NS 4108 F1	Protected cultivation	Beith alpha	17-19	Shiny dark green	Winter	IR: PM, CMV, CVYV HR: ZYMV
NS 4104 F1	Protected cultivation	Beith alpha	18-20	Shiny dark green	Spring, Summer and fall	IR: PM, CMV HR: Cca, ZYMV
NS 4115 F1	Protected cultivation	Beith alpha	17-19	Shiny dark green	Winter	IR: PM HR: Cca
NS 4153 F1	Protected cultivation	Beith alpha	17-19	Shiny dark green	Spring, Fall and Winter	IR: PM
NS 4109 F1	Protected cultivation	Beith alpha	16-19	Dark green	Autumn-Spring	IR: PM
NS 4175 F1	Protected cultivation	Beith alpha	16-19	Dark green	Fall	IR: PM, Cca, CMV HR: CVYV



SQUASH

International Portfolio

**NS 9837 F1**

Hybrid suitable for open field cultivation in the Middle East. Strong, open type plants with ease of harvesting. Fruits retain fresh green and shiny look. Good shelf life. This hybrid has moderate tolerance to ZYMV, PRSV and WMV.

**NS 9883 F1**

Hybrid suitable for open field cultivation in tropics. Strong, open type plants with ease of harvesting. Fruits retain fresh green and shiny look. This hybrid has moderate tolerance to ZYMV, PRSV and WMV.

SQUASH

Variety	Maturity	Plant type	Plant vigour	Fruit colour	Fruit shape	Fruit length (cm)
NEW NS 9844 F1	Early	Semi erect	Good	Light green	Club	15-18 cm
NEW NS 9837 F1	Early	Semi erect	Good	Light green	Club	18-20 cm
NEW NS 9891 F1	Early	Erect	Good	Light green	Cylindrical	16-20 cm
NS 9828 F1	Early	Erect	Good	Light green	Cylindrical	15-18 cm
NS 9883 F1	Early	Semi erect	Moderate	Dark green	Cylindrical	16-20 cm



Cauliflower



NS 1118 F1

Semi-erect plant type exhibiting intermediate resistance to black rot, 60-65 days maturity. Dome-shaped, creamy white, compact curds.



NS 555 F1

Intermediate resistance to black rot, maturity of 65-70 days. Semi-erect in nature with excellent semi-dome, creamy white curds with good self-blanching qualities.

TEMPERATE CAULIFLOWER

Variety	Maturity (days)	Plant habit	Curd shape	Curd colour	Average curd weight (kg)
NEW NS 1118 F1	70-75	Semi erect	Dome	White	1.5-1.8
NS 95 F1	80-85	Erect	Dome	Milky white	1.6-1.8
NS 106 F1	75-80	Erect	Dome	Milky white	1.8-2.0
NS 1117 F1	50-55	Semi erect	Semi dome	Creamy white	0.8-1.0

TROPICAL CAULIFLOWER

Variety	Maturity (days)	Plant habit	Curd shape	Curd colour	Average curd weight (kg)
NEW NS 1119 F1	45-50	Semi erect	Semi dome	Creamy white	0.3-0.4
NEW NS 1358 F1	60-65	Semi erect	Dome	Creamy white	1.0-1.2
NEW NS 136 F1	55-60	Semi erect	Dome	Creamy white	0.7-0.9
NS 555 F1	65-70	Semi erect	Semi dome	White	1.3-1.5



CABBAGE



Saurabh F1

Exhibits excellent field holding capacity. This early maturing hybrid has a compact head with excellent shipping quality.



NS 43 F1

Uniform hybrid with flat head and medium compactness. Exhibits good tolerance to heat and black rot.

NS 22 F1

A late-season hybrid, maturing in 70 days. Has a round and compact head with excellent field-holding capacity.

TROPICAL CABBAGE

Variety	Head shape	Maturity (days)	Foliage colour	Head firmness	Average head weight (kg)
NEW NS 1323 F1	Flat	60-65	Light bluish green	Good	1.5-2.0
NEW NS 1353 F1	Semi-round	75-80	Bluish green	Excellent	2.0-2.5
NEW NS 1319 F1	Round to semi round	60-65	Dark bluish green	Good	1.0-1.2
Saurabh F1	Round	55-60	Dark bluish green	Very good	1.3-1.5
NEW NS 1304 F1	Round	60-65	Dark bluish green	Excellent	1.0-1.2
NS 43 F1	Flat	60-65	Green	Good	1.8-2.0
NS 183 F1	Round to semi-round	60-65	Dark bluish green	Excellent	1.8-2.0
NS 22 F1	Round to semi round	60-70	Green	Good	1.8-2.0
NS 196 F1	High round	60-70	Dark bluish green	Good	1.3-1.5



Asian Gourds

SPONGE GOURD

NS 441 F1

Early, vigorous continuous bearing hybrid with dark green cylindrical fruits. White and tender flesh
With good cooking quality.



Variety	Maturity (days)	Fruit colour	Flesh colour	Seed colour	Fruit shape	Fruit length (cm)	Average fruit weight (kg)
NS 1825 (F1)	40-45	Light green	White	White	Cylindrical	25-30	0.15-0.2
NS 441 (F1)	40-45	Dark green	White	Black	Cylindrical	25-30	0.2-0.25

BOTTLE GOURD

NS 439 F1

A high yielder with a vigorous plant. Uniform green cylindrical fruits. Has late seed maturity.



Variety	Maturity (days)	Fruit shape	Fruit colour	Fruit length (cm)	Fruit weight (kg)
KAVERI F1	50-55	Cylindrical	Light green	25-30	0.3-0.4
NS 439 F1	40-45	Long cylindrical	Green	45-50	0.5-0.55
NS 4825 F1	60-65	Long Cylindrical	Green	35-40	1.0-1.25



Ridge Gourd



NS 4789 F1

High yielding hybrid maturing in 40-45 days with a high level of tolerance to downy mildew. Uniform cylindrical fruits.

Variety	Maturity (days)	Fruit colour	Fruit shape	Fruit length (cm)	Fruit weight (kg)
NEW NS 4750 F1	45-50	Green	Cylindrical	45	0.3-0.35
NEW NS 4752 F1	45-50	Green	Cylindrical	35-40	0.2-0.25
NEW NS 4753 F1	45-50	Green	Cylindrical	35-40	0.2-0.25
NS 4789 F1	40-45	Green	Cylindrical	40-45	0.2-0.25
NS 4751 F1	40-45	Dark green	Cylindrical	40-45	0.2-0.25
NS 3 F1	40-45	Green	Cylindrical	45-50	0.25-0.30



Bitter Gourd





NS 4501 F1

High yielding variety with a vigorous plant habit, Short fruited with good shipping quality.

NS 4529 F1

Prolific bearing variety with compact plant habit Medium size fruits with good shipping quality and long duration harvesting.

Variety	Maturity (days)	Fruit Colour	Fruit length (cm)	Fruit weight (grams)
NEW NS 4529 F1	55-60	Dark green	16-18	120-150
NEW NS 4580 F1	55-60	Dark green	25-30	160-180
NS 4501 F1	50-55	Dark green	8-10	40-50
NS 4509 F1	50-55	Dark green	10-12	70-90
NS 435 F1	50-55	White	18-20	175-200
Parry F1	60-65	Dark green	25-30	150-200
NS 1024 F1	60-65	Dark green	25-30	150-200



Carrot





NS 9906 F1

Early maturing kuroda-type hybrid suitable for both plains and hills. Tolerant to high temperatures.



NS 9905 F1

A perfect cylindrical shaped, deep orange colored nantes, with good field holding capacity and attractive shiny roots.

KURODA

Variety	Root shape	Root colour	Core size	Root length (cm)	Average root weight (kg)
NS 9906 F1	Conical	Orange	Very small	16-18	0.13-0.15
Super Kuroda OP F1	Conical	Orange	Small	15-20	0.12-0.14

NANTES

Variety	Root shape	Root colour	Core size	Root length (cm)	Average root weight (kg)
AYESHA F1	Cylindrical	Deep orange	Very small	18-20	0.14-0.16
NS 9905 F1	Cylindrical	Deep orange	Very small	18-20	0.13-0.15



Marigold





NS 1501 F1

A superior yielding, strong vigorous variety that is well-branched, has short internodes and exhibits good disease tolerance. It bears bright yellow flowers with good firmness that are suitable for long transportation.

NS 1503 F1

A high-yielding variety suitable for long distance. This tall, vigorous plant bears medium-sized consistent double ball-shaped flowers. These orange-colored flowers exhibit good firmness (compactness) and disease tolerance.

Variety	Season (s)	Plant height (cm)		Plant spread (cm)		Flower colour	Flower size (cm)		First flowering (DAT)		Avg flower weight (grams)
		Kharif	Rabi	Kharif	Rabi		Kharif	Rabi	Kharif	Rabi	
NS 1501 F1	Suitable for all seasons	80-90	60-70	70-75	60-65	Bright yellow	7-8	6-7	35	35	14-16
NS 1503 F1	Suitable for all seasons	80-90	60-70	70-75	60-65	Orange	7-8	6-7	30	30	11-13



Coriander

Surabhi (OP)

Vigorous variety having excellent yield potential. Suitable for multiple cuts with aromatic and attractive large shiny leaves. It is a late-bolting variety and can be grown round the year.



Variety	Type	Maturity (days)	Plant vigour	Foliage colour	Stalk length (cm)
Surabhi (OP)	Multi cut	35	Good	Dark green	20-25



President – Seeds Business

Sameer Sawant
sameer@namdhariseeds.com

Marketing Team India

National Sales Manager

Shivbilas Singh
+91 9910201494
shivbilas@namdhariseeds.com

National Sales Manager (Field crops)

Jai Prakash Mishra
+91 9958901370
jp@namdhariseeds.com

Product Development Head

Yashwant Singh Rajput
+91 9826125673
yashwantsingh.rajput@namdhariseeds.com

International Marketing Team

Egypt

Hesham Mostafa Farag
+20 101 150141
egypt@namdhariseeds.com

Address -
Namdhari Seeds Pvt. Ltd.,
11, Ahmed wash street, Almaza,
Heliopolis, Cairo, EGYPT

Turkey

Ayhan Ekici
+90 242 502 66 44
turkey@namdhariseeds.com

Address-
Namdhari Seeds Tohumculuk Tic Ltd.
STI Meydankavagi Mah, Perge Bulvari
Atmaca is merkezi, 74/10
Muratpasa-Antalya/Turkey

Thailand

Tarunvir Singh Sandhu
+91 87280 00390
tarunvir@namdhariseeds.com

Janjarut Saedan
+66 91 072 3663
nssthailand@namdhariseeds.com

Address -
Namdhari Siam Seeds Co., Ltd.
217, MOO-3, Tambon – Kileg,
Amphae-Maetang,
Chieng Mai, Thailand-50150

Indonesia

Mahesh Hanji
+91 99805 47352
indonesia@namdhariseeds.com

Fefy Revina
+62 857 9122 7334
indonesia@namdhariseeds.com

Address-
PT Namdhari Seeds,
Taman Sulfat VIII-H2, Purwantara
Agung-Blingbing
Malang, Indonesia-65141

Bangladesh

Kunal Sood
+91 73553 32411
kunal@namdhariseeds.com

Shahidul Islam
+880 1760-300606
Shahidul @namdhariseeds.com

Customer Service

Kaveri Subramani
+91 9902616302
kaveri@namdhariseeds.com

Terminology used in Disease Resistance :

Regarding resistance to diseases mentioned in different crops, the terminologies/symbols used in this catalogue are based on ISF decision adopted in May 2005 - 'Definition of the terms describing the reaction of plants to pests or pathogens and to abiotic stresses for the vegetable seed industry'

High/standard resistance (HR*) : Plant varieties that highly restrict the growth and development of the specified pest or pathogen under normal pest or pathogen pressure when compared to susceptible varieties. These plant varieties may, however, exhibit some symptoms or damage under heavy pest or pathogen pressure.

Moderate/Intermediate resistance (IR*): Plant varieties that restrict the growth and development of the specified pest or pathogen but may exhibit a greater range of symptoms or damage compared to high/standard resistant varieties.

Moderately/intermediately resistant plant varieties will still show less severe symptoms or damage than susceptible plant varieties when grown under similar environmental conditions and/ or pest or pathogen pressure.

Caution :

Since crops are subject to many conditions beyond the sellers control, all seeds sold by us are sold as is (Tel Quell) without any warranty expressed or implied. By acceptance of our seeds and also by use of our seeds, the purchaser agrees that any liability of ours, whatsoever in nature or theory shall be limited to the amount of the purchase price. The crop yield and performance indicated are based on trials conducted at our research farm. Field performance is subject to agroclimatic conditions and management practices adopted by the farmers.

Abbreviations

DAS- Days After Sowing

DAT – Days After Transplanting

HR- High/Standard Resistant

IR- Moderate/Intermediate Resistant

V- Verticillium wilt

Fol2- Fusarium wilt

N- Root knot Nematode

ToMV- Tomato Mosaic Virus

FCR- Fusarium Crown Rot

Sm- Streptomycin

LCV – Leaf Curl Virus

TSWV- Tomato Spotted Wilt Virus

TYLCV- Tomato Yellow Leaf Curl Virus

Cf – Cladosporium

BW – Bacterial Wilt

PM – Powdery Mildew

CMV – Cucumber Mosaic Virus

CVYV – Cucumber Vein Yellowing Virus

ZYMV – Zucchini Yellow vein Mosaic Virus

Cca – Corynespora blight

ELCV – Enation Leaf Curl Virus

YVMV – Yellow Vein Mosaic Virus



Namdhari Seeds™
Seeds for a better future



Uragahalli, Bidadi Post, Ramanagara Taluk, Bidadi - 562 109, Karnataka, India

Email: info@namdhariseeds.com | Call: +91-9845471271 / 72

Website: www.namdhariseeds.com